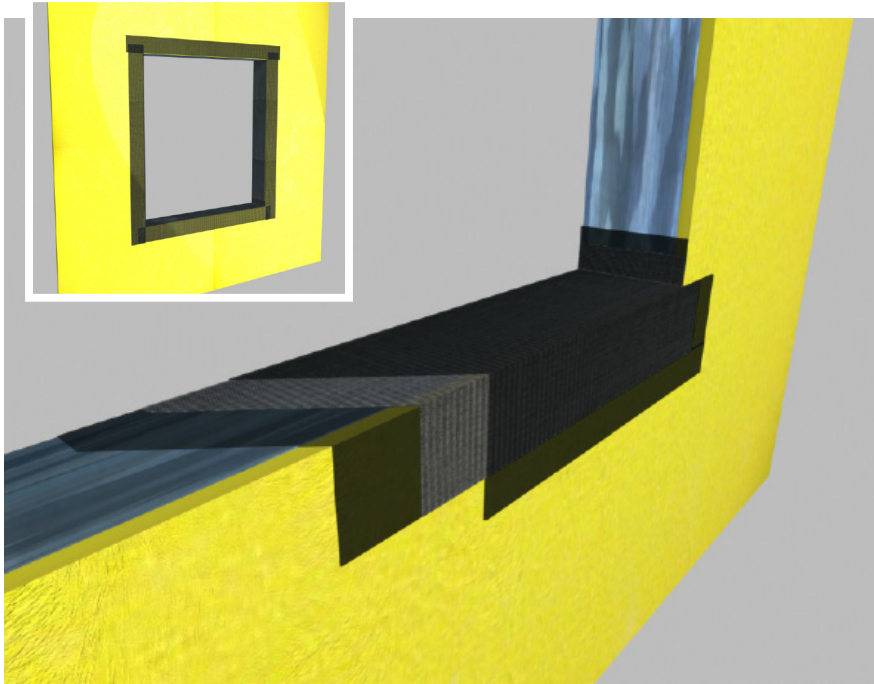


# AQUAFLASH SYSTEM

DS.EN.04.56.10

A liquid-applied flashing material and mesh for sealing rough openings at windows, doors and sheathing board joints



## PRODUCT DESCRIPTION

AquaFlash Liquid is an extremely flexible, water-based polymer material used in conjunction with AquaFlash Mesh to seal substrates around windows, doors, other openings and seal sheathing board joints to achieve air tightness.

## FEATURES & BENEFITS

FEATURE	BENEFIT
• Single component liquid system	Use directly from the pail
• Flexible polymer technology	Resists cracking
• Water resistive polymer	Compatible with Dryvit Backstop NT range

## WORKING TIME

AquaFlash Liquid provides a working time similar to paint. The product will not set-up in the pail. Keep unused material covered to prevent evaporation. Any surface skin should be removed prior to use.

## DRYING TIME

The drying time of AquaFlash System is dependent upon the air temperature, wind conditions and relative humidity. Under average drying conditions (20°C, 55% R.H.), AquaFlash System will be dry in approximately 30 minutes on absorbent substrates and 90 minutes on non-absorbent substrates.

## USES

The AquaFlash System provides an effective, water-resistant transition membrane to provide continuity of Dryvit's Backstop NT air and water-resistant barrier between different substrate materials and to bridge across sheathing joints, at openings, at inside and outside corners, as well as across floor lines.

## PACKAGING

AquaFlash Liquid 15 kg plastic pail.

AquaFlash Mesh all rolls 55 m long  
100 mm width rolls 9 per box  
150 mm width rolls 6 per box  
230 mm width rolls 4 per box

## COVERAGE

	AquaFlash Liquid
<b>Mesh Width</b>	<b>15 kg</b>
100 mm	380 (25.5 m/kg) m
150 mm	250 (16.8 m/kg) m
230 mm	170 (11.4m/kg) m



# AQUAFLASH SYSTEM

DS.EN.04.56.10

A liquid-applied flashing material and mesh for sealing rough openings at windows, doors and sheathing board joints

## ACCEPTABLE SUBSTRATES

- Cement Particle Boards meeting BS EN 634-2
- Core treated exterior grade gypsum sheathing with fiberglass mat facers meeting EN 15283-1 Types GM-F, GM-H1, GM-I.
- Exterior fibre reinforced cement or calcium/magnesium silicate boards.
- Exterior Rated Plywood meeting EN 636-3
- Exterior Grade Fire Retardant Treated Plywood, (Euroclass B or C) 12.5 mm minimum.
- OSB/3 meeting BS EN 300.
- Unpainted, unsealed masonry, concrete and block work.
- Galvanised metal and aluminium

## JOB CONDITIONS

Air and substrate temperature for application of AquaFlash System must be 4°C or higher and must remain so for a minimum of 12 hours or until dry. Cool, damp conditions may require longer drying time. Temporary protection shall be provided at all times until membrane, adhesive, base coat, finish and permanent flashings, sealants, etc. are completed to protect the wall from weather and other damage.

## SUBSTRATE PREPARATION

Substrate surfaces shall be sound, dry and free of foreign materials such as dirt, dust, oil, paint, wax, water repellents or other materials that inhibit adhesion. The AquaFlash System can bridge substrate gaps up to 6.5 mm. Larger gaps may require special treatment.

## MIXING

AquaFlash Liquid is ready for use after an initial spin-up using a drill with paddle mixer. Do not add cement or other additives.

## APPLICATION METHOD

Using a brush or mini medium pile paint roller, apply a liberal coat of AquaFlash Liquid material to the substrate surface. Immediately embed the AquaFlash Mesh into the wet material. Add additional AquaFlash Liquid material and smooth out to remove any wrinkles and fully embed the mesh. Allow to set for a minimum of 15 minutes, apply a second liberal coat of AquaFlash Liquid and smooth out to ensure a uniform continuous film free of voids, pinholes or other discontinuities.

## HEALTH AND SAFETY

Refer to the appropriate Dryvit system Application Instructions and the product Safety Data Sheet.

**Dryvit UK Ltd**  
Unit 4 Wren Park  
Hitchin Road  
Shefford  
Bedfordshire  
SG17 5JD  
01462 819555  
Email: [ukenquiries@dryvit.com](mailto:ukenquiries@dryvit.com)  
[www.dryvit.co.uk](http://www.dryvit.co.uk)



Information contained in this product data sheet conforms to the standard detail recommendations and specifications for the installation of Dryvit UK Ltd. products as of the date of publication of this document and is presented in good faith. Dryvit UK Ltd. assumes no liability, expressed or implied, as to the architecture, engineering or workmanship of any project. To ensure that you are using the latest, most complete information, contact Dryvit UK Ltd.

**Manufacturing location:** Dryvit Systems USA (Europe) krze Duze7; 96-325 Radziejowice, Poland